



PADS Standard Plus

Design for Manufacturing Analysis Option

Why In-house DFMA?

Subject	Design Organization	Supplier
Product costs	Minimize costs	Maximize profit
DFM trade-offs	Wants control of decisions	Wants control of decisions
Design revision spins	Wants to minimize/eliminate	Makes money off each spin
PCB design integrity	Wants PCB built as designed	Wants/needs to edit PCB designs for manufacturing processes
Communication	Expects full disclosure of edits	Will communicate as required
Component sourcing	Wants control for quality reasons	Wants control for costs/profit reasons

MAJOR BENEFITS:

- Finds manufacturing issues in designs prior to production
- Reduces production delays by minimizing “call-backs”
- Includes more than 100 of the most critical fabrication and assembly-related analyses
- Easy-to-use user interface

OVERVIEW

By integrating DFM analysis into your PADS® flow, you can minimize production issues, achieve fewer revision spins per design, and save time in your release schedule.

PCB manufacturers have different business goals than you do so it’s critical that your design be prepared correctly for manufacturing before you send it to them. For example, fabricators who care more about their profit margins than they do about the long-term quality of your design may make design changes that expedite production without communicating them back to you.

To retain control over your design, it’s essential to find and resolve problems such as resist slivers, unintended copper exposed by soldermasks, and improper testpoint-to-testpoint spacing during layout. By validating your PCB layout for fabrication and assembly before manufacturing, you’ll save money and get your product to market more quickly.

The PADS DFMA option, available only with PADS Standard Plus, includes more than 100 of the most commonly used fabrication and assembly analyses, making it easy to identify issues that cause production delays. After performing critical net routing, you can also use PADS to analyze circuit integrity and timing and ensure that all design criteria are met before sending your board to manufacturing.

GREAT RESULTS WITH PADS

“The benefits we’ve seen from using PADS include increased productivity, improved DFM and fewer design errors.”

Source: TechValidate CA8-762-A42

WHY USE DFM ANALYSIS?

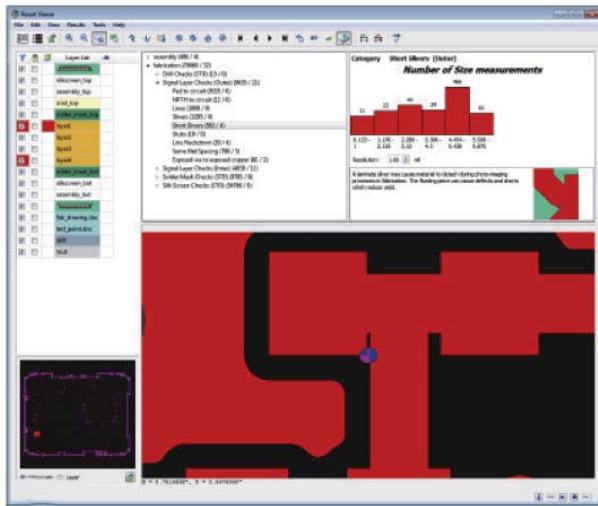
Design for Manufacturing Analysis verifies the manufacturability of a design, as CAD and DRC tools doesn't detect all manufacturing issues.

With the PADS DFMA option, you can validate critical copper spacing and run manufacturing checks for thermal connect reduction, copper slivers, insufficient soldermask coverage, line neckdowns, testpoint density, silkscreens, extra solderpaste, component spacing validation, and more.

PADS comprehensive DFMA approach allows production release of your design while minimizing the possibility of manufacturing issues and resulting delays.

SYNCHRONIZE WITH YOUR SUPPLY CHAIN

To ensure that your design is free of manufacturing challenges, you should perform the same analyses as your manufacturer. Not doing so can result in costly errors being missed.



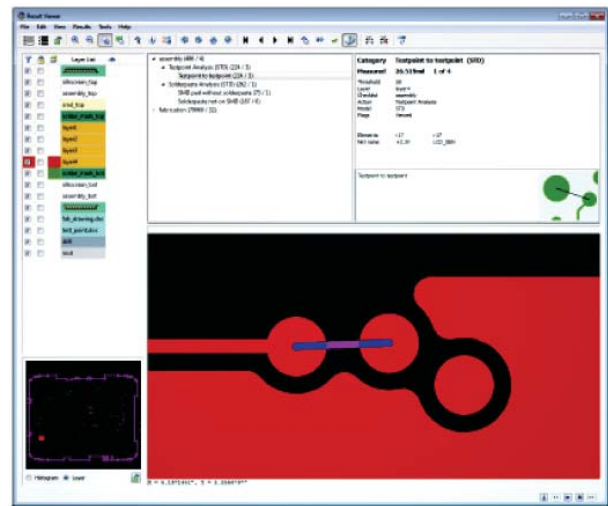
Use DFM analysis in the PADS flow to identify assembly and test challenges before they can cause challenges during production.

Rooted in the same DFM technology used by most PCB fabricators and assembly organizations today, the PADS DFMA option adds manufacturing process rules to traditional design-rule checks by implementing your suppliers' manufacturing requirements. This ensures that you evaluate the productivity of your design prior to releasing it for production. Using PADS DFMA reduces manufacturing delays and design spins, and creates higher-quality designs.

MANUFACTURING REVIEW

Before your design enters the prototype stage, you can quickly process it through an automated fabrication, assembly, and test verification to help you find and fix design issues that would result in increased manufacturing costs or lower yields.

Problematic manufacturing conditions are simultaneously reviewed within PADS as part of the layout creation process, making it easy to locate and correct manufacturing challenges at the source. Once corrected, PADS moves to the next potential manufacturing challenge for quick resolution.



Adding DFM analysis to PADS Standard Plus improves fabrication yields by identifying correctable resist slivers, copper neckdowns, and inferior power connections.

For the latest product information, call us or visit: www.pads.com

©2015 Mentor Graphics Corporation, all rights reserved. This document contains information that is proprietary to Mentor Graphics Corporation and may be duplicated in whole or in part by the original recipient for internal business purposes only, provided that this entire notice appears in all copies. In accepting this document, the recipient agrees to make every reasonable effort to prevent unauthorized use of this information. All trademarks mentioned in this document are the trademarks of their respective owners.

Corporate Headquarters
Mentor Graphics Corporation
8005 SW Boeckman Road
Wilsonville, OR 97070-7777
Phone: 503.685.7000
Fax: 503.685.1204

Sales and Product Information
Phone: 800.547.3000
sales_info@mentor.com

Silicon Valley
Mentor Graphics Corporation
46871 Bayside Parkway
Fremont, CA 94538 USA
Phone: 510.354.7400
Fax: 510.354.7467

North American Support Center
Phone: 800.547.4303

Europe
Mentor Graphics
Deutschland GmbH
Arnulfstrasse 201
80634 Munich
Germany
Phone: +49.89.57096.0
Fax: +49.89.57096.400

Pacific Rim
Mentor Graphics (Taiwan)
Room 1001, 10F
International Trade Building
No. 333, Section 1, Keelung Road
Taipei, Taiwan, ROC
Phone: 886.2.2752000
Fax: 886.2.27576027

Japan
Mentor Graphics Japan Co., Ltd.
Gotenyama Garden
7-35, Kita-Shinagawa 4-chome
Shinagawa-Ku, Tokyo 140-0001
Japan
Phone: +81.3.5488.3033
Fax: +81.3.5488.3004

Mentor Graphics

MF 6-15 1032260-w