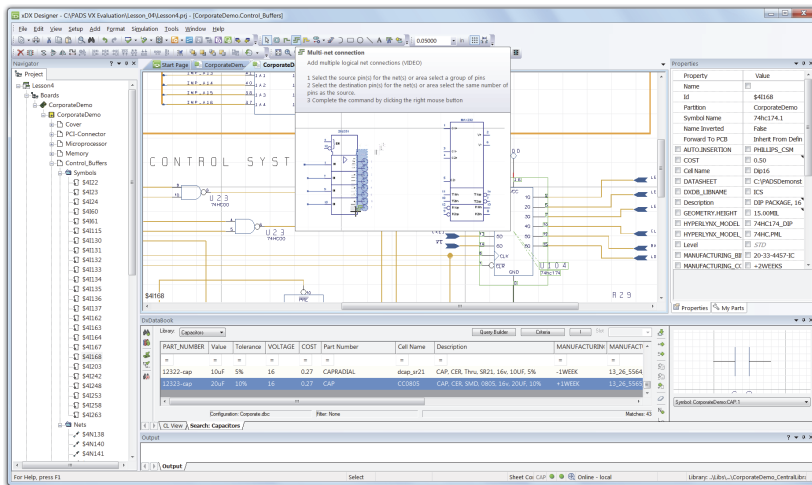




## Schematic Design



PADS provides a complete solution for desktop system-design definition.

## OVERVIEW

PADS® is powerful and easy-to-use, making the capture and definition of your schematic simple and fast. Intuitive project and design navigation, complete hierarchical support, and advanced tools for design rules and attribute management help you meet your PCB design goals. Achieve efficiency and productivity with schematic enablers like component management, full forward and backward annotation to layout and routing, and a direct link to signal integrity analysis.

You can set and verify your design constraints as early in the schematic design phase as you want. Quick access to the library content makes the search, placement, and verification of new symbols simple. The high level of automation, combined with advanced graphics and extended tool tips, makes it easy and efficient to use PADS, whether you are a frequent or a casual user.

Intuitive and highly scalable, PADS provides a productive design environment that reduces design cycle time. Deep, integrated capabilities enable concurrent design entry, design and component information management, design variants, and analysis and verification.

## CONSTRAINT-BASED DESIGN

Use PADS to get your job done right the first time by setting constraints early in the design process. Direct access to constraints during schematic editing shows only the constraints for the objects you've currently selected.

## BENEFITS:

- Highly productive and easy-to-use design creation tool
- Broad search & edit capabilities
- Integrated library browser for intuitive parts management
- Table-based design of high-pin-count components
- Full hierarchical support for design reuse

Intuitive and highly scalable, PADS provides a productive design environment that reduces design cycle time. Deep, integrated capabilities enable concurrent design entry, design and component information management, design variants, and analysis and verification.

By setting constraints early in the design cycle, you avoid creating designs that cannot be sourced due to high part costs, or producing boards that do not meet performance or manufacturing requirements.

With PADS you can see the status of all component data, making it easy to choose the optimal part for your design. You can also verify an entire design against the corporate database to ensure that all data are consistent and correct.

## MAXIMUM VALUE, MINIMUM EFFORT

PADS is designed to provide powerful schematic capture capabilities while being easy-to-use and intuitive.

**Design Automation** increases your productivity and minimizes manual work with powerful automation capabilities.

**Multi-Net Connections** lets you connect symbols with minimum effort, giving you absolute control over how nets are routed. Start your routing by selecting pins, and easily create multiple pin-to-pin connections driven by selection of two pins. Pin direction is indicated by the selection box and intuitively displayed. Selection areas can be viewed in different colors, with +/- modes, depending on the direction.

**Automated Manual Routing** increases productivity for digital and analog design. With a single mouse click you can drop a net on multiple, pre-placed symbols to create / connect individual nets. You can also drop components on existing nets by opening nets and reconnecting them to dropped components.

With PADS you can automatically move a component placed on a bus, rip the nets, and route them to the component. You can also disconnect nets by area selection.

**For the latest product information, call us or visit: [www.pads.com](http://www.pads.com)**

©2014 Mentor Graphics Corporation, all rights reserved. This document contains information that is proprietary to Mentor Graphics Corporation and may be duplicated in whole or in part by the original recipient for internal business purposes only, provided that this entire notice appears in all copies. In accepting this document, the recipient agrees to make every reasonable effort to prevent unauthorized use of this information. All trademarks mentioned in this document are the trademarks of their respective owners.

**Corporate Headquarters**  
Mentor Graphics Corporation  
1005 SW Boeckman Road  
Wilsonville, OR 97070-7777  
Phone: 503.685.7000  
Fax: 503.685.1204  
**Sales and Product Information**  
Phone: 800.547.3000  
sales\_info@mentor.com

**Silicon Valley**  
Mentor Graphics Corporation  
46871 Bayside Parkway  
Fremont, CA 94538 USA  
Phone: 510.354.7400  
Fax: 510.354.7467  
**North American Support Center**  
Phone: 800.547.4303

**Europe**  
Mentor Graphics  
Deutschland GmbH  
Arnulfstrasse 201  
80634 Munich  
Germany  
Phone: +49.89.57096.0  
Fax: +49.89.57096.400

**Pacific Rim**  
Mentor Graphics (Taiwan)  
Room 1001, 10F  
International Trade Building  
No. 333, Section 1, Keelung Road  
Taipei, Taiwan, ROC  
Phone: 886.2.87252000  
Fax: 886.2.27576027

**Japan**  
Mentor Graphics Japan Co., Ltd.  
Gotenyama Garden  
7-35, Kita-Shinagawa 4-chome  
Shinagawa-Ku, Tokyo 140-0001  
Japan  
Phone: +81.3.5488.3033  
Fax: +81.3.5488.3004



LVG 01\_14 1032200-w

**Dynamic Alignment** provides alignment markers to aid in symbol placement, and spacing markers to ensure equal spacing between symbols. You can also use top, bottom, and center marks and PADS supports mixed symbols with text, saving hours in tidying up schematics.

**Extended Tool Tips** minimize your learning curve, eliminating the need for extensive training. Now the help you need is at your fingertips, with animated video 'How-to's' for out-of-the-box ease of use. Even a casual user can easily learn PADS, getting quick demonstrations and additional information on the fly.

**Advanced Graphics** make sheet navigation easy. Jump to specific areas of action to ensure schematic elements can be placed in the desired location, aligned with other schematic elements. Dynamic graphical rule checks increase schematic quality, as a correct-by-construction approach is used to eliminate time-consuming manual correction of overlapping objects late in the design process.

**My Parts Toolbox** is an advanced placement mechanism, making placement fast and efficient based on favorite and recently used parts. The toolbox customizes parts suggestions to your needs, making placement easy and intuitive.

## PUBLISH SCHEMATIC DATA INSIDE THE ORGANIZATION

With PADS, you can share design data inside your organization (e.g., schematics, library data, or any other design data) through a web server, so any user with the appropriate permission can gain access to the shared information.

PADS can be integrated with PLM systems and other corporate operations, through a customizable bill-of-materials, searchable PDF schematics, and archives of design data. PADS also supports a centralized, internet-based library, so that only one version of the corporate library needs to be maintained.