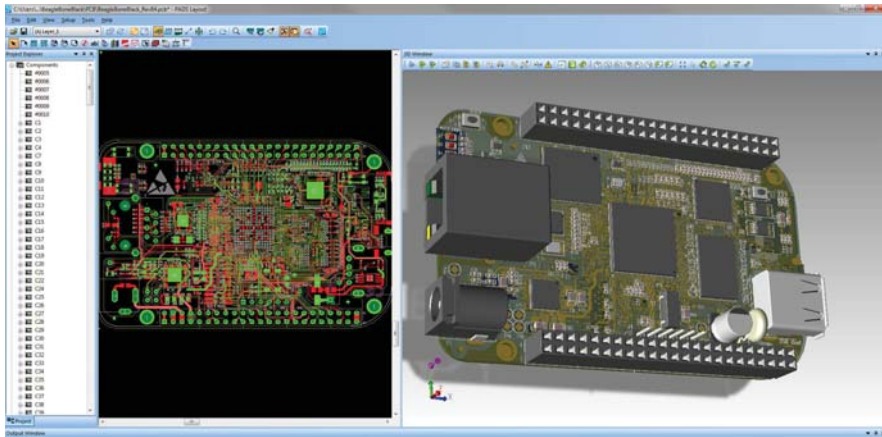




# PADS Standard Affordable PCB design



PADS Standard is an easy-to-use desktop PCB design flow for the individual engineer and designer.

## OVERVIEW

PADS® Personal Automated Design Solutions provide a powerful environment that helps solve the PCB design challenges you meet every day. Using PADS, you will get your job done faster and better, while saving costs.

Geared toward the engineer looking for high value, production-proven tools, PADS Standard provides schematic design and layout capabilities in an intuitive and easy-to-use environment. PADS Standard is ideal for less complex board design, and where cost savings is a high priority.

Easy-to-use schematic and layout translators help import libraries and designs from your current toolset, whether it's Allegro®, Altium® Designer, CADSTAR®, OrCAD®, P-CAD®, or Protel®.

## FEATURES AND BENEFITS:

- Easy to learn and use
- Proven technology for schematic capture and PCB design
- Accurately handles your tough design problems
- Reduces design time
- Verified libraries ensure fast design starts
- Full 3D visualization prevents assembly errors and conflicts

Mentor Graphics Research by TechValidate

**Quality, On-Time Design**

"PADS allows me to design boards faster. The result is a quality design in the time frame specified for the project."

Source: PCB Designer, S&P 500 Electronics Company  
www.techvalidate.com/product-research/mentor-graphics-pads TMD: 84F-8C1-698

Mentor Graphics Research by TechValidate

**Need an easy-to-use PCB design environment?**

96% of surveyed customers who chose PADS for its ease of use would recommend PADS to a friend. 

Source: Survey of 306 PADS customers who chose PADS for its ease of use  
www.techvalidate.com/product-research/mentor-graphics-pads TMD: 8D-7D2-94E

## Schematic Design

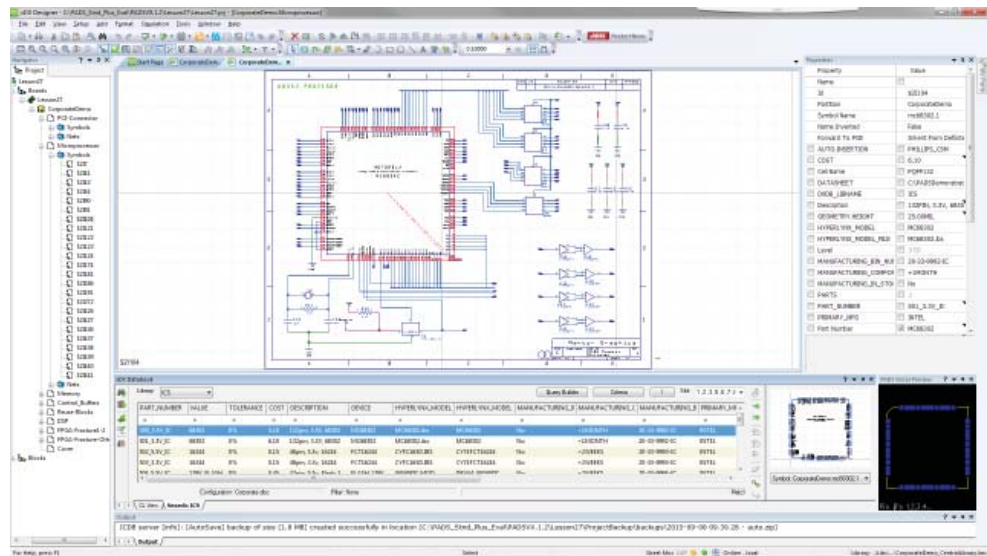
PADS includes broad capabilities for system design capture and definition. Intuitive project and design navigation, complete hierarchical support, a starter library, and advanced design attribute and design rules management make it easy to capture and define your schematic.

Achieve efficiency and productivity with full forward and backward annotation to layout and routing.

PADS includes all design rules and constraints with online DRC. The multi-level hierarchy guides you through the process of capturing rules in a dialog-box-driven user interface. Default, class, net, group, pin pair, layer, conditional, and component rules are included.

## Component Management

With PADS component management, you have access to all component information from a single spreadsheet, without concern for data redundancy, multiple libraries, or time-consuming tool overhead. PADS easily integrates with corporate component and MRP databases through industry-standard ODBC (Open Database Connectivity),



Select and place parts from the component manager as you design your schematic.

enabling geographically dispersed design teams to access central component information.

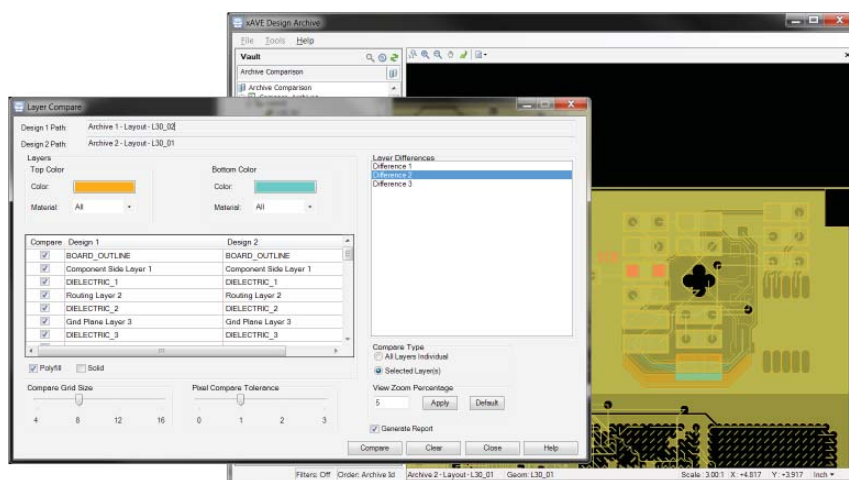
With PADS component management, databases are kept in sync and up-to-date, thus avoiding costly redesigns and quality problems that otherwise might be undetected until late in the design cycle.

## PartQuest™

PADS connects to partquest.com, a website tightly integrated with the component supplier Digi-Key and their full component catalog. Research, identify, and purchase the right parts for your new design, then download the schematic symbol, footprint, and parametric information directly into the PADS libraries. PartQuest provides access to nearly half a million parts, each with complete library data. Additional parts are added regularly.

## Archive Management

PADS archive management does much more than take project snapshots. PADS saves all design information in a secure vault on your PC or network and adds collaborative tools for streamlining and improving engineering design reviews.



View reports graphically to compare differences, easily generate reports, and add red-lining and markups for future reference.

With PADS, you can create multiple backups of your project data and easily retrieve that data later for review and modifications. You don't have to worry about losing design data while performing different scenarios (e.g., constraint management, simulation and analyses, different placement options), as PADS automatically creates archives of each scenario, saving you time and costs.

View and search the vaults to see contents quickly and easily with graphical preview. Use the vault to restore backups, create a new project from existing archives, and compare versions. Improve team collaboration with archive searching, report generation, and comparison. Add comments and information easily with intelligent redlining that associates specific design objects and organizes comments logically by issue or topic.

## PCB Layout

The advanced layout and routing capabilities in PADS save countless hours of design time.

The combination of design rules with real-time design rule checking and bi-directional cross-probing ensures that boards adhere to your design specifications, thus eliminating costly fixes after prototype and manufacturing.

Split and mixed planes are also easy to create and modify, making customized thermal connections a snap.

RF capabilities include via-stitching for easy creation of co-planar wave guides and the ability to flood a region with vias according to your rules. The import of complex RF shapes and chamfered corners is also supported.

Auto-dimensioning, direct DXF import into the board and part library editor, advanced fabrication verification tools, STEP and IDF link to third-party mechanical tools, and 3D viewing are also included.



*PADS is easy to deploy, learn, and use, making it ideal for both the casual or occasional user, as well as the power user.*

With PADS Standard, you have a photorealistic visualization of your PCB, helping you eliminate costly and time-consuming errors by visualizing the PCB in 3D, and identifying conflicts with mechanical objects. The 3D visualization includes components, pads, traces, vias, and planes. You also have realistic silkscreen and solder mask, and dynamic object synchronization. In your 3D view, you can measure distance, and object-to-object minimum distance.

Easily import STEP models to add 3D item to your layout view, i.e. components, enclosure, board assembly, etc. You can also export your 3D assembly into STEP, 3D PDF, JPG, BMP, and more in a few simple mouse clicks.



*Take measurements in PADS Standard in a full 3D photorealistic view of your PCB assembly to know the exact distance between objects.*

## Routing

Easily and interactively route all your design elements, including analog, digital, and mixed-mode, with PADS. With PADS you have control over all routing aspects and can choose between orthogonal, diagonal, and any-angle styles. Proven routing algorithms let you apply design rules between objects or groups of objects, such as components, layers, nets, and vias.

Operations best suited to an autorouter include fanout and routing by individual components or groups of components.

## Why Mentor Graphics?

When selecting a PCB design solution, you're looking for more than new design tools; you're looking for a partner can help you achieve your business goals.

Mentor Graphics is a \$1.24 billion company based in Wilsonville, Oregon that has been helping companies like yours be successful in electronic product design since 1983.

Our focused development of powerful, easy-to-use capabilities within the PADS flow help you solve today's toughest PCB design challenges. This razor-sharp approach has made us the worldwide standard in desktop PCB design and the only five-time STAR award winner for EDA customer support.

For the latest product information, call us or visit: [www.pads.com](http://www.pads.com)

©2015 Mentor Graphics Corporation, all rights reserved. This document contains information that is proprietary to Mentor Graphics Corporation and may be duplicated in whole or in part by the original recipient for internal business purposes only, provided that this entire notice appears in all copies. In accepting this document, the recipient agrees to make every reasonable effort to prevent unauthorized use of this information. All trademarks mentioned in this document are the trademarks of their respective owners.

### Corporate Headquarters

**Mentor Graphics Corporation**  
8005 SW Boeckman Road  
Wilsonville, OR 97070-7777  
Phone: 503.685.7000  
Fax: 503.685.1204

### Sales and Product Information

Phone: 800.547.3000  
[sales\\_info@mentor.com](mailto:sales_info@mentor.com)

### Silicon Valley

**Mentor Graphics Corporation**  
46871 Bayside Parkway  
Fremont, CA 94538 USA  
Phone: 510.354.7400  
Fax: 510.354.7467

### North American Support Center

Phone: 800.547.4303

### Europe

**Mentor Graphics  
Deutschland GmbH**  
Arnulfstrasse 201  
80634 Munich  
Germany  
Phone: +49.89.57096.0  
Fax: +49.89.57096.400

### Pacific Rim

**Mentor Graphics (Taiwan)**  
Room 1001, 10F  
International Trade Building  
No. 333, Section 1, Keelung Road  
Taipei, Taiwan, ROC  
Phone: 886.2.87252000  
Fax: 886.2.27576027

### Japan

**Mentor Graphics Japan Co., Ltd.**  
Gotenyama Garden  
7-35, Kita-Shinagawa 4-chome  
Shinagawa-Ku, Tokyo 140-0001  
Japan  
Phone: +81.3.5488.3033  
Fax: +81.3.5488.3004

