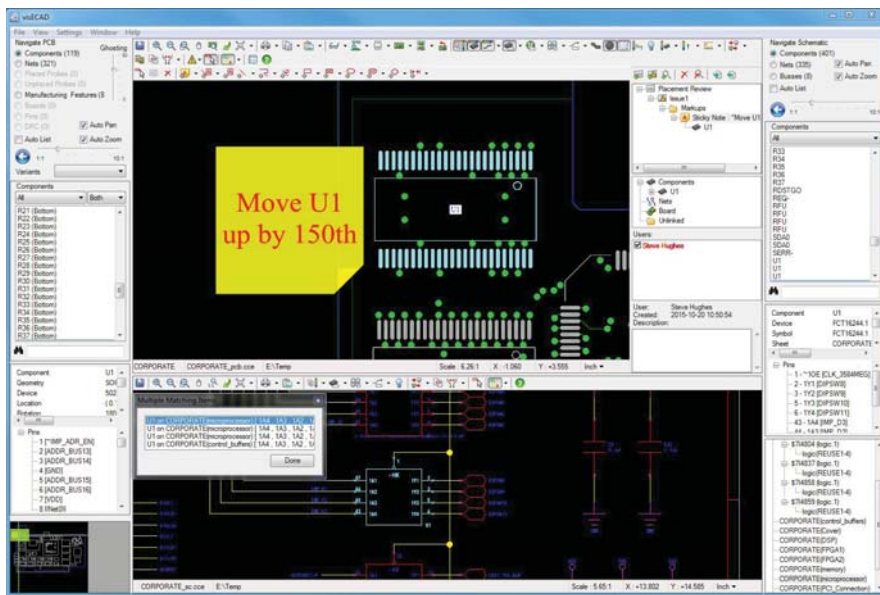




Design Review



Here, the PCB layout and schematic with collaboration notes being added to both drawings.

OVERVIEW

Accelerating development from concept to delivery is the key to profitability for today's electronic products. Fundamental to achieving this acceleration is effective information flow within and between organizations. Proper communication ensures that all stakeholders within the product delivery chain have their needs addressed — thus eliminating defects and design re-spins. Collaboration, supported by automated solutions, enables the effective communication required to reach maximum profits.

To effectively review complex PCB schematic and layout designs many companies struggle with ineffective, time-consuming processes. Often they can only rely on unintelligent Gerber data, inflexible PDF files, or printed information to relay design review feedback between departments for collaboration.

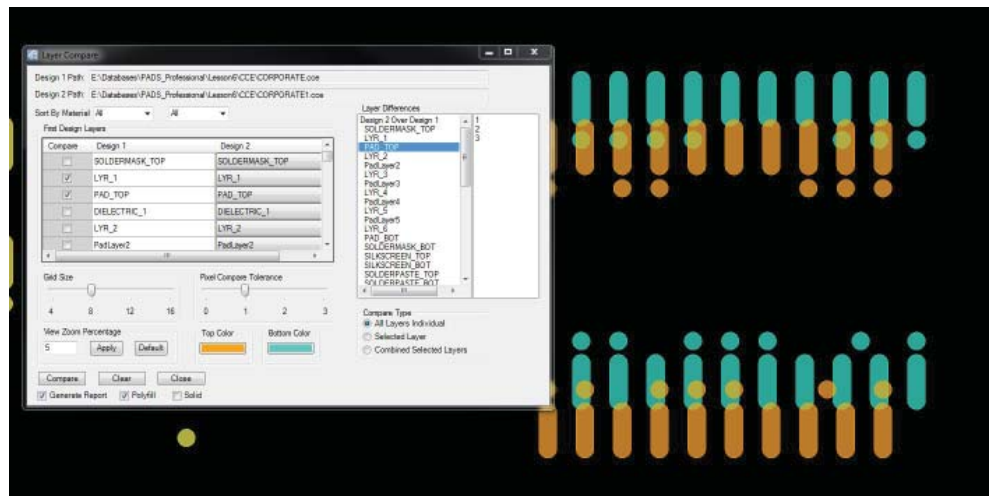
PADS Professional Design Review enables collaboration between all stakeholders in the design process. Collaboration can now be effectively achieved within design teams, between design and manufacturing groups, and within manufacturing. Passing intelligent data via a comprehensive viewer provides faster, more accurate, and easier collaboration on any design. Schematic capture and layout information is presented to the user with all the intelligence of the authoring tools, but without having to consume the design tool licenses.

MAJOR BENEFITS:

- Eliminates errors and omissions by enabling review input to be provided within and between departments and organizations
- Schematic and layout collaboration enhanced through ECAD-neutral CCE formats
- Eliminates ambiguity between departments with direct markup of the PCB or schematic
- Maximum markup clarity with redline, sticky note, hyperlinks, and embedded images
- Quickly understand differences between designs with graphical, data and netlist comparisons
- Optional HTML and custom delimited reporting available

External Collaboration

The design review tool displays PCB design, schematic, and other electronic manufacturing data in a single, intelligent environment. This allows combining all relevant data and electronically sharing it, both within and external to the local design team, for collaborative visualization across all departments, design reviews, and manufacturing processes. Critical information is captured and provided to the right people at the right time to accelerate product introduction and profitability.



Individual layers are overlaid and compared for differences.

Graphical, Data and Netlist Comparison

The design-compare option provides three significant reports for design comparisons; one is a graphical layer-by-layer compare, an intelligent data compare and a netlist comparison. The graphical compare report analyzes a bitmap of each layer to its counterpart on another design and determines any variation between the two. The data compare performs 18 different data driven checks between the two designs and reports differences between the two. The netlist compare analyzes the netlist part of schematic or layout designs for differences in content and net names.

Collaborative Markups

A simple and comprehensive structure supports viewing and markup activities that drive collaborative efforts. Authorized users can start or participate in discussions or markups and have their comments logged for peer to peer review.

The standard HTML reporting option allows the creation of standard output reports on the design data. Design summary, placement, line length, and netlist reports are available. Also, custom output templates can be created and used to export delimited reports that can be easily read by other, downstream systems.

DRC Review Option

DRC results can be reviewed and comments entered against them. Individual or groups of DRCs can be easily converted to more detailed markup discussions as well. The reporting option can be used to export an HTML DRC report with images showing all the issues.

For the latest product information, call us or visit: www.pads.com

©2015 Mentor Graphics Corporation, all rights reserved. This document contains information that is proprietary to Mentor Graphics Corporation and may be duplicated in whole or in part by the original recipient for internal business purposes only, provided that this entire notice appears in all copies. In accepting this document, the recipient agrees to make every reasonable effort to prevent unauthorized use of this information. All trademarks mentioned in this document are the trademarks of their respective owners.

Corporate Headquarters
Mentor Graphics Corporation
8005 SW Boeckman Road
Wilsonville, OR 97070-7777
Phone: 503.685.7000
Fax: 503.685.1204

Sales and Product Information
Phone: 800.547.3000
sales_info@mentor.com

Silicon Valley
Mentor Graphics Corporation
46871 Bayside Parkway
Fremont, CA 94538 USA
Phone: 510.354.7400
Fax: 510.354.7467

North American Support Center
Phone: 800.547.4303

Europe
Mentor Graphics
Deutschland GmbH
Arnulfstrasse 201
80634 Munich
Germany
Phone: +49.89.57096.0
Fax: +49.89.57096.400

Pacific Rim
Mentor Graphics (Taiwan)
Room 1001, 10F
International Trade Building
No. 333, Section 1, Keelung Road
Taipei, Taiwan, ROC
Phone: 886.2.87252000
Fax: 886.2.27576027

Japan
Mentor Graphics Japan Co., Ltd.
Gotenyama Garden
7-35, Kita-Shinagawa 4-chome
Shinagawa-Ku, Tokyo 140-0001
Japan
Phone: +81.3.5488.3033
Fax: +81.3.5488.3004

**Mentor
Graphics®**

MF 11-15 1952185-w